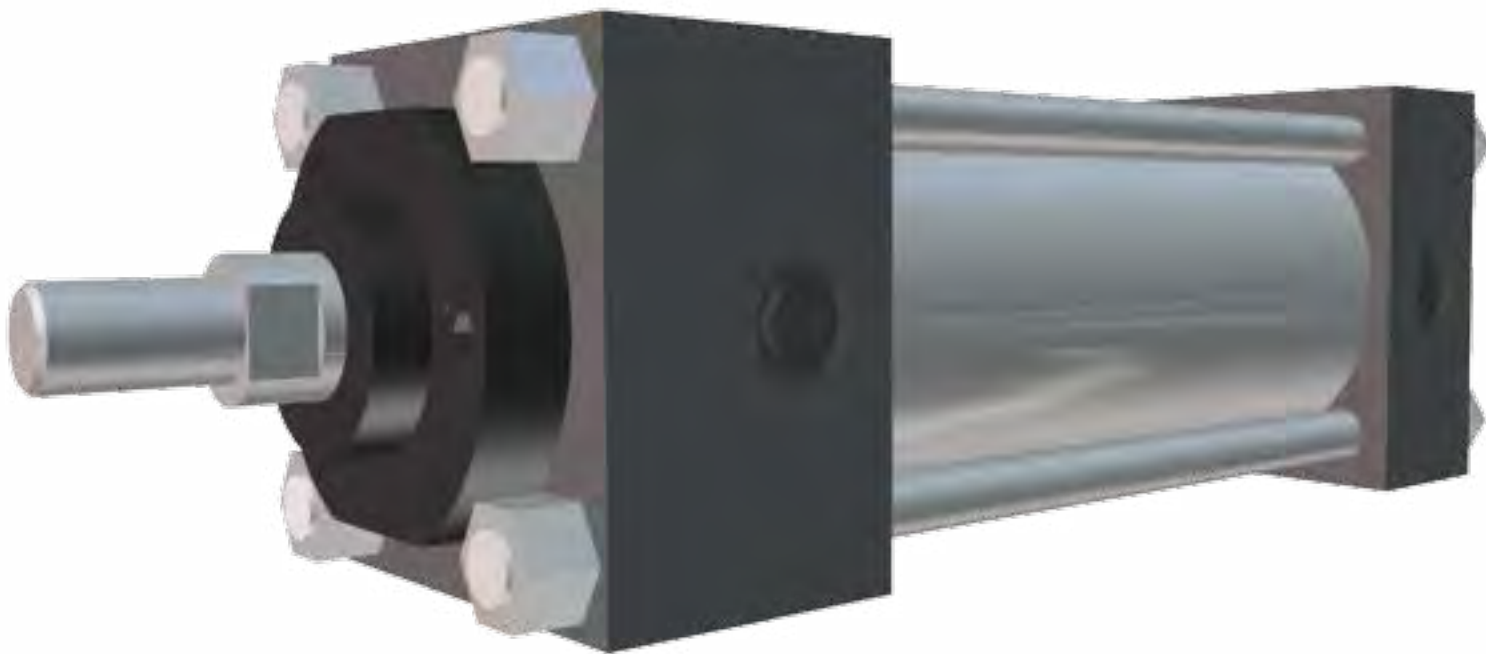


Class 5A

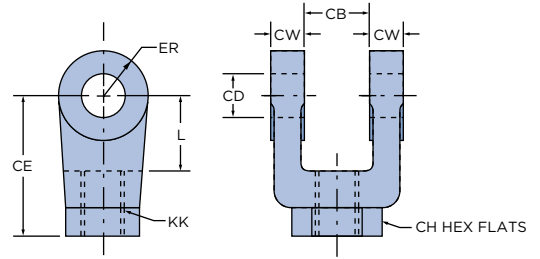
Low Pressure NFPA Aluminum Cylinders



ROD CLEVIS DIMENSIONS									
PART NUMBER	MAX LOAD (TENSION) RATED IN LBS	CB	CD (DIA.)	CE	CH	CW	ER (RADIUS)	KK	L
2834L59-A	2950	0.750	0.500	1.500	1.000	0.500	0.500	7/16-20	0.750
2835L59-A	11200	1.250	0.750	2.375	1.250	0.625	0.750	3/4-16	1.250
2836L59-A	19500	1.500	1.000	3.125	1.500	0.750	1.000	1-14	1.500
2837L59-A	26800	2.000	1.375	4.125	2.000	1.000	1.375	1-1/4-12	2.125
2838L59-A	39500	2.500	1.750	4.500	2.375	1.250	1.750	1-1/2-12	2.250
2839L59-A	56000	2.500	2.000	5.500	3.000	1.250	2.000	1-7/8-12	2.500

ROD CLEVIS

**MATERIAL: CAST STEEL
FINISH: BLACK OXIDE**

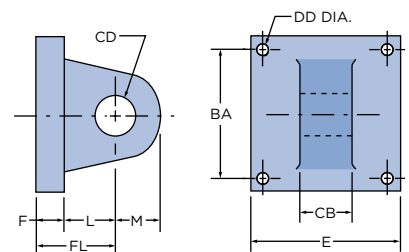


(Clevis Pins sold separately from Rod Clevises)
Note: When using a Rod Clevis in combination with an Eye Bracket, the operating angle is limited to +/-75° from the bracket center line.

EYE BRACKET DIMENSIONS										
PART NUMBER	MAX LOAD (TENSION) RATED IN LBS	BA	CB	CD (DIA.)	DD	E	F	FL	L	M
2716L47-A	3375	1.625	0.750	0.500	0.406	2.500	0.375	1.125	0.750	0.500
2719L32-A	8400	2.563	1.250	0.750	0.531	3.500	0.625	1.875	1.250	0.750
2720L33-A	13500	3.250	1.500	1.000	0.656	4.500	0.750	2.250	1.500	1.000
2721L34-A	25000	3.813	2.000	1.375	0.656	5.000	0.875	3.000	2.125	1.375
2722L35-A	45000	4.938	2.500	1.750	0.906	6.500	0.875	3.125	2.250	1.750
2723L36-A	45000	5.750	2.500	2.000	1.063	7.500	1.000	3.500	2.500	2.000

EYE BRACKET

**MATERIAL: CAST STEEL
FINISH: BLACK OXIDE**

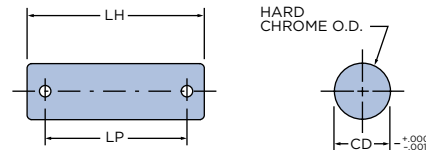


(Clevis Pins sold separately from Eye Brackets)

CLEVIS PIN (WITH COTTER PINS)			
PART NUMBER	CD (DIA.)	LH	LP
3222L47-1-A	0.500	2.250	1.938
3222L47-2-A	0.750	3.000	2.719
3222L47-3-A	1.000	3.500	3.219
3222L47-4-A	1.375	5.000	4.250
3222L47-5-A	1.750	6.000	5.500
3222L47-6-A	2.000	6.000	5.500

CLEVIS PIN (INCLUDES COTTER PIN)

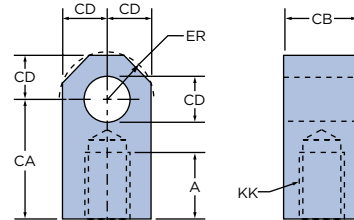
**MATERIAL: 1045 CRS
FINISH: CHROME PLATED O.D.**



ROD EYE DIMENSIONS							
PART NUMBER	MAX LOAD (TENSION) RATED IN LBS	A	CA	CB	CD (DIA.)	ER (RADIUS)	KK
1810L59-A	2950	0.750	1.500	0.750	0.500	0.625	7/16-20
1812L59-A	8400	1.125	2.063	1.250	0.750	0.875	3/4-16
1813L59-A	13500	1.625	2.813	1.500	1.000	1.180	1-14
1814L59-A	24500	2.000	3.438	2.000	1.375	1.563	1-1/4-12
1815L59-A	39000	2.250	4.000	2.500	1.750	2.000	1-1/2-12
1817L59-A	45000	3.000	5.000	2.500	2.000	2.500	1-7/8-12

ROD EYE

**MATERIAL: 1018 CRS
FINISH: BLACK OXIDE**

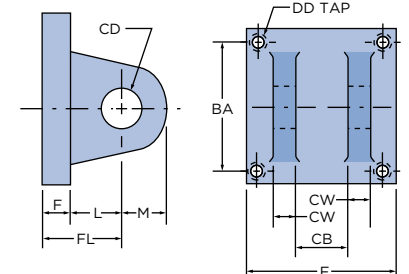


(Clevis Pins sold separately from Rod Eyes)
Note: When using a Rod Eye in combination with a Clevis Bracket, the operating angle is limited to +/-90° from the bracket center line.

CLEVIS BRACKET DIMENSIONS											
PART NUMBER	MAX LOAD (TENSION) RATED IN LBS	BA	CB	CD (DIA.)	CW	DD	E	F	FL	L	M
2683L47-A	4500	1.625	0.750	0.500	0.500	3/8-24	2.500	0.375	1.125	0.750	0.500
2684L47-A	8400	2.563	1.250	0.750	0.625	1/2-20	3.500	0.625	1.875	1.250	0.750
2685L47-A	13500	3.250	1.500	1.000	0.750	5/8-18	4.500	0.750	2.250	1.500	1.000
2686L47-A	34000	3.813	2.000	1.375	1.000	5/8-18	5.000	0.875	3.000	2.125	1.375
2687L47-A	54000	4.938	2.500	1.750	1.250	7/8-14	6.500	0.875	3.125	2.250	1.750
2688L47-A	89000	5.750	2.500	2.000	1.250	1-14	7.500	1.000	3.500	2.500	2.000

CLEVIS BRACKET

**MATERIAL: CAST STEEL
FINISH: BLACK OXIDE**



(Clevis Pins sold separately from Clevis Brackets)