

Class 1, 2, M

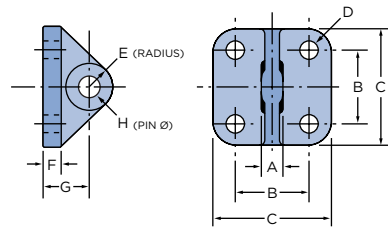
Low Pressure Cast-Head Cylinders



NOPAK

First in Manufacturing. Engineered to Last.

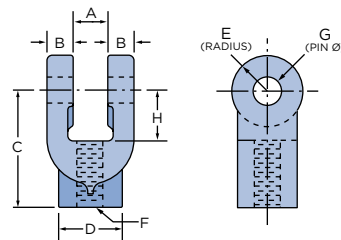
STANDARD MOUNTING BRACKET AND PIN



Mounting Brackets of high grade malleable iron or steel plate stock are designed to fit the blank end of Model E cylinders or into the slot of the clevises described below. Order by size and part number.

CYL. DIA.	A	B	C	D	E	F	G	BRACKET		MTG. PIN "H"	PIN	
								FORMER P/N	CURRENT P/N		FORMER P/N	CURRENT P/N
1-1/2	7/16	1-3/4	2-3/4	13/32	1/2	3/8	1-3/16	1430CY	1801L00	3/8	3253CY-1	3221L46-1
2	7/16	2	3-1/4	17/32	5/8	1/2	1-3/8	1630CY	1802L46	1/2	3253CY-3	3221L46-3
2-1/2	7/16	2	3-1/4	17/32	5/8	1/2	1-3/8	1630CY	1802L46	1/2	3253CY-3	3221L46-3
3	7/16	2	3-1/4	17/32	5/8	1/2	1-3/8	1630CY	1802L46	1/2	3253CY-3	3221L46-3
4	5/8	3-1/4	4-1/2	17/32	7/8	1/2	1-3/4	1796CY	1803L46	3/4	3253CY-4	3221L46-4
5	5/8	3-1/4	4-1/2	17/32	7/8	1/2	1-3/4	1796CY	1803L46	3/4	3253CY-4	3221L46-4
6	7/8	4-1/4	5-1/2	17/32	1-1/8	5/8	2	1797CY	1804L06	7/8	3253CY-5	3221L46-5
8	1	5	6-1/2	21/32	1-1/4	3/4	2-1/2	1798CY	1805L07	1	3253CY-6	3221L46-6
10	1-1/4	6	8	25/32	1-1/2	1	3	1799CY	1806L08	1-1/4	3253CY-7	3221L46-7
12	1-3/4	6-3/4	10	1-1/16	2	1-1/4	3-1/2	1800CY	1807L09	1-1/2	3253CY-8	3221L46-8
14	2-1/4	8	10-1/2	1-5/16	2-1/8	1-1/2	3-3/4	2958CY	1767L46	1-3/4	3253CY-9	3221L46-9

STANDARD FEMALE CLEVIS AND PIN



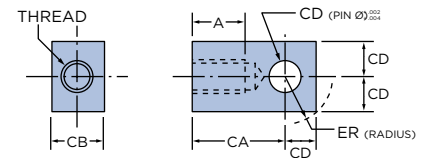
Clevises of high grade malleable iron are available for all standard model and size Class 1 and 2 cylinders. Clevises for any diameter cylinder are threaded for that particular standard 1 rod end. Class 1 and 2 cylinders with oversize rod and Class M cylinders will therefore require a larger clevis unless the rod end is turned down. Be sure to specify when ordering. Special clevises available made to order.

CYL. DIA.*	THREAD "F"■	A	B	C	D	E	G	H	CLEVIS		MTG. PIN "G"	PIN	
									FORMER P/N	CURRENT P/N		FORMER P/N	CURRENT P/N
1-1/2	5/8-18	17/32	3/8	1-5/8	1	1/2	1/2	3/4	4330CY	1787L46	1/2	3253CY-3	3221L46-3
2	5/8-18	17/32	3/8	1-5/8	1	1/2	1/2	3/4	4330CY	1787L46	1/2	3253CY-3	3221L46-3
2-1/2	3/4-16	17/32	1/2	2	1-1/4	5/8	1/2	7/8	4331CY	1788L46	1/2	3253CY-3	3221L46-3
3	3/4-16	17/32	1/2	2	1-1/4	5/8	1/2	7/8	4331CY	1788L46	1/2	3253CY-3	3221L46-3
4	1-14	25/32	3/4	2-5/8	1-1/2	3/4	3/4	1-1/8	4332CY	1789L46	3/4	3253CY-4	3221L46-4
5	1-14	25/32	3/4	2-5/8	1-1/2	3/4	3/4	1-1/8	4332CY	1789L46	3/4	3253CY-4	3221L46-4
6	1-1/4-12	1-1/32	15/16	3-1/4	1-3/4	1-1/8	7/8	1-3/8	4333CY	1790L06	7/8	3253CY-5	3221L46-5
8	1-3/4-12	1-9/32	1	3-3/4	2-1/2	1-1/4	1	1-1/2	16989CY	1791L07	1	3253CY-6	3221L46-6
10	2-12	1-17/32	1-1/4	4-3/4	3	1-1/2	1-1/4	1-3/4	1373CY	1792L08	1-1/4	3253CY-7	3221L46-7
12	2-1/2-12	2-1/32	1-1/2	5-7/8	3-1/2	1-3/4	1-1/2	2-1/8	1374CY	1793L46	1-1/2	3253CY-8	3221L46-8
14▲	2-1/2-12	2-1/32	1-1/2	5-7/8	3-1/2	1-3/4	1-1/2	2-1/8	1374CY	1793L46	1-1/2	3253CY-8	3221L46-8

- * = Indicates Class 1 and 2 cylinder diameter with Standard 1 NF rod end which clevis will fit.
- = 1-1/2-12 thread clevis 7286L07 (4334CY) available. Dimensions on 1791L07 (18510CY) apply.
- ▲ = For 5 Rod only on 14" diameter.

STANDARD ROD EYE AND PIN

THREAD	A	CA	CB	CD	ER	ROD EYE		PIN	
						FORMER P/N	CURRENT P/N	FORMER P/N	CURRENT P/N
5/8-18	7/8	1-5/8	1	1/2	3/4	21789CY	1811L59	3253CY-3	3221L46-3
3/4-16	1-1/8	2-1/16	1-1/4	3/4	1-1/16	7061CY	1812L59	3253CY-4	3221L46-4
1-14	1-5/8	2-13/16	1-1/2	1	1-7/16	7062CY	1813L59	3253CY-6	3221L46-6
1-1/4-12	2	3-7/16	2	1-3/8	2	7063CY	1814L59	3253CY-4	3221L46-4
1-3/4-12	2-1/4	4	2-1/2	1-3/4	2-1/16	21790CY	1816L59	3253CY-9	3221L46-9
2-12	3	5	2-1/2	2	2-1/4	23464CY	1819L59	3253CY-11	3221L46-11
2-1/2-12	3-1/2	6-1/8	3	3	3-1/4	23465CY	1823L59	3253CY-7	3221L46-7



Rod eyes of mild steel are available for all standard model and size Class 1 and Class 2 cylinders with 1 rod ends. Other sizes of rod eyes are also available. Pins for rod eye, are not furnished unless requested.

TYPICAL PIN STYLES

