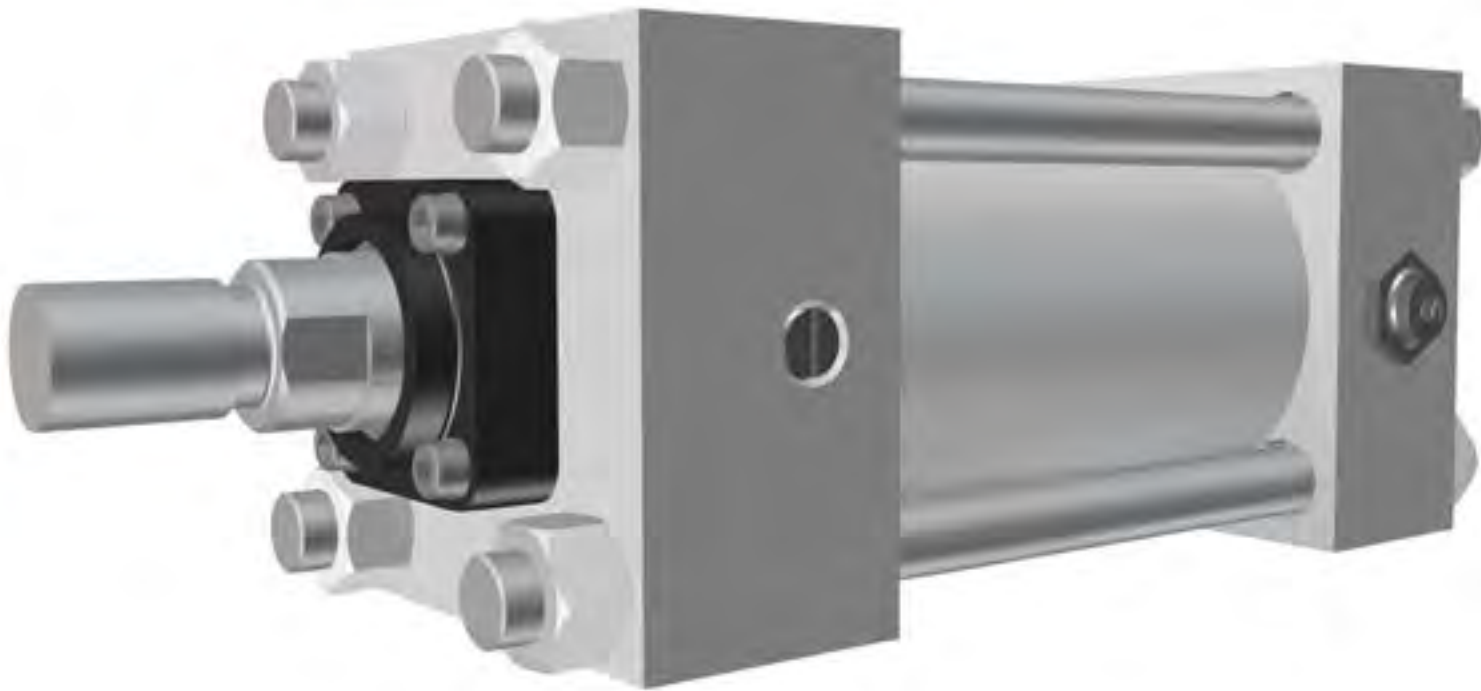
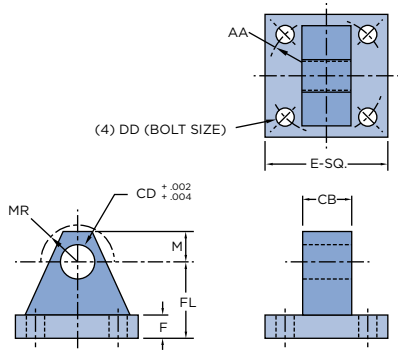


Class 6

Intermediate Pressure Square-Head Cylinders

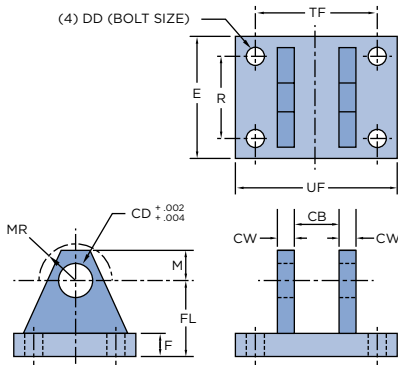


EYE BRACKET



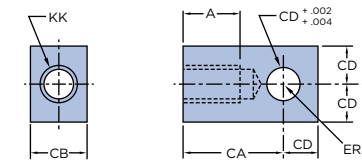
CYL. DIA.	E	F	M	AA	CB	CD	DD	FL	MR	PART NO.
1-1/2-2-2-1/2	2-1/2	3/8	1/2	2.30	3/4	1/2	3/8	1-1/8	5/8	2716L47
3-1/4-4-5	3-1/2	5/8	3/4	3.61	1-1/4	3/4	1/2	1-7/8	7/8	2719L32
6-8	4-1/2	7/8	1	4.60	1-1/2	1	5/8	2-3/8	1-1/4	2720L33
10	5	7/8	1-3/8	5.40	2	1-3/8	5/8	3	1-5/8	2721L34
12	6-1/2	1-1/8	1-3/4	7.00	2-1/2	1-3/4	7/8	3-3/8	2	2722L35
14-16	7-1/2	1-7/16	2	8.10	2-1/2	2	1	3-15/16	2-3/8	2723L36
18	8-1/2	1-5/8	2-1/2	9.30	3	2-1/2	1-1/8	4-5/8	3	2724L37
20	9-1/2	2	2-3/4	10.61	3	3	1-1/4	5-1/4	3-1/4	2725L38

MOUNTING BRACKET



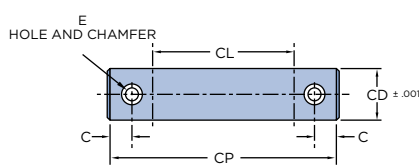
CYL. DIA.	E	F	M	R	CB	CD	CW	DD	FL	MR	TF	UF	PART NO.
1-1/2-2-2-1/2	2-1/2	3/8	1/2	1.63	3/4	1/2	1/2	3/8	1-1/8	5/8	2-3/4	3-1/2	2683L47
3-1/4-4-5	3-1/2	5/8	3/4	2.55	1-1/4	3/4	5/8	1/2	1-7/8	7/8	3-3/4	4-3/4	2684L47
6-8	4-1/2	7/8	1	3.25	1-1/2	1	3/4	5/8	2-3/8	1-1/4	4-1/2	5-3/4	2685L47
10	5	7/8	1-3/8	3.82	2	1-3/8	1	5/8	3	1-5/8	5-1/2	6-3/4	2686L47
12	6-1/2	1-1/8	1-3/4	4.95	2-1/2	1-3/4	1-1/4	7/8	3-3/8	2	7	8-1/2	2687L47
14-16	7-1/2	1-7/16	2	5.73	2-1/2	2	1-1/4	1	3-15/16	2-3/8	7-1/2	9-1/4	2688L47
18	8-1/2	1-5/8	2-1/2	6.58	3	2-1/2	1-1/2	1-1/8	4-5/8	3	8-1/2	10-1/2	2689L47
20	9-1/2	2	2-3/4	7.50	3	3	1-1/2	1-1/4	5-1/4	3-1/4	8-3/4	10-3/4	2690L47

EYE (FEMALE)



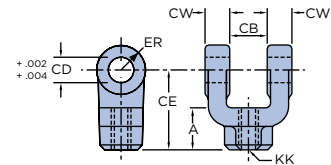
KK	A	CA	CB	CD	ER	PART NO.
7/16-20	3/4	1-1/2	3/4	1/2	5/8	1810L59
3/4-16	1-1/8	2-1/16	1-1/4	3/4	1-1/16	1812L59
1-14	1-5/8	2-13/16	1-1/2	1	1-7/16	1813L59
1-1/4-12	2	3-7/16	2	1-3/8	2	1814L59
1-1/2-12	2-1/4	4	2-1/2	1-3/4	2-1/16	1815L59
1-7/8-12	3-1/2	5	2-1/2	2	2-1/4	1817L59
2-1/4-12	3-1/2	5-13/16	3	2-1/2	2-7/8	1820L59
2-1/2-12	3-1/2	6-1/8	3	3	3-1/8	1821L59
3-1/4-12	4-1/2	7-5/8	4	3-1/2	3-7/8	1824L59

PIVOT - PIN



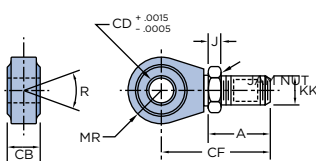
CYL. DIA.	C	E	CD	CP	CL	PART NO.
1-1/2-2-2-1/2	3/16	1/8	1/2	2-3/8	1-3/4	3222L47-1
3-1/4-4-5	1/4	3/16	3/4	3-1/8	2-1/2	3222L47-2
6-8	1/4	3/16	1	3-5/8	3	3222L47-3
10	1/4	3/16	1-3/8	4-3/4	4	3222L47-4
12	1/4	3/16	1-3/4	5-13/16	5	3222L47-5
14	5/16	1/4	2	5-13/16	5	3222L47-6
16	5/16	1/4	2-1/2	6-7/8	6	3222L47-8
18-20	5/16	1/4	3	6-7/8	6	3222L47-7
ROD EYE & CLEVIS	3/8	1/4	3-1/2	9-1/4	8	3222L47-9

CLEVIS (FEMALE)



KK	A	CB	CD	CE	CW	ER	PART NO.
7/16-20	3/4	3/4	1/2	1-1/2	1/2	1/2	2834L59
3/4-16	1-1/8	1-1/4	3/4	2-3/8	5/8	3/4	2835L59
1-14	1-5/8	1-1/2	1	3-1/8	3/4	1	2836L59
1-1/4-12	2	2	1-3/8	4-1/8	1	1-3/8	2837L59
1-1/2-12	2-1/4	2-1/2	1-3/4	4-1/2	1-1/4	1-3/4	2838L59
1-7/8-12	3	2-1/2	2	5-1/2	1-1/4	2	2839L59
2-1/4-12	3-1/2	3	2-1/2	6-1/2	1-1/2	2-1/2	2840L59
2-1/2-12	3-1/2	3	3	6-3/4	1-1/2	2-3/4	2841L59
3-1/4-12	4-1/2	4	3-1/2	8-1/2	2	3-1/2	2842L59

SPHERICAL ROD EYE



CYL. DIA.	A	J	R	CB	CD	CF	KK	MR	THRUST RATING	PART NO.
1-1/2-2-2-1/2	1-1/2	1/4	12°	5/8	1/2	2-7/16	7/16-20	11/16	5,500#	2825L48-1
1-1/2-2-2-1/2	15/16	1/4	12°	5/8	1/2	1-7/8	7/16-20	11/16	5,500#	2825L48-2
3-1/4-4-5	1-3/4	7/16	13-1/2°	7/8	3/4	2-7/8	3/4-16	7/8	10,000#	2825L48-3
6-8	2-1/8	9/16	14°	1-3/8	1	4-1/8	1-14	1-7/16	12,000#	2825L48-4
8	2-1/8	9/16	14°	1-3/8	1	4-1/8	1-14	1-7/16	19,000#	2825L48-5

For 8" Cyl. Diameter — Hydraulics only.