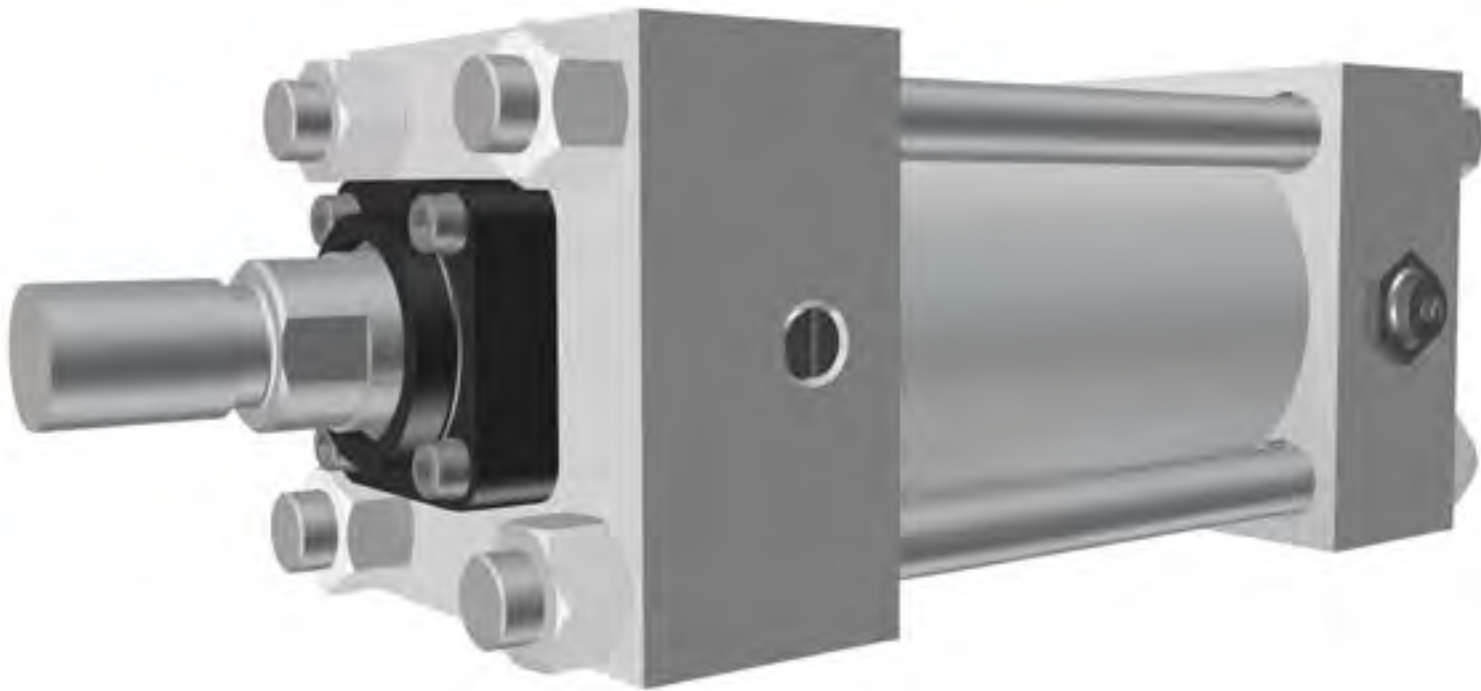


Class 6

Intermediate Pressure Square-Head Cylinders



HOW TO ORDER

YOU CAN HELP ENSURE PROMPT PROCESSING OF YOUR ORDER BY INCLUDING ALL OF THE FOLLOWING REQUESTED INFORMATION:

1. Quantity required.
2. Operating medium: Series P6 or H6.
P for pneumatic and H for hydraulic.
3. Bore size.
4. Stroke length in inches.
5. Type of mounting (NOPAK Model or NFPA STD. style).
6. Type of cushioning:
 NN = non-cushioned
 NA = cushioned blind end
 AN = cushioned rod end
 AA = cushioned both ends
7. Piston rod diameter and type of rod threading - specify Type 1, 3, 4, 5, 6 or 7. See page 130.

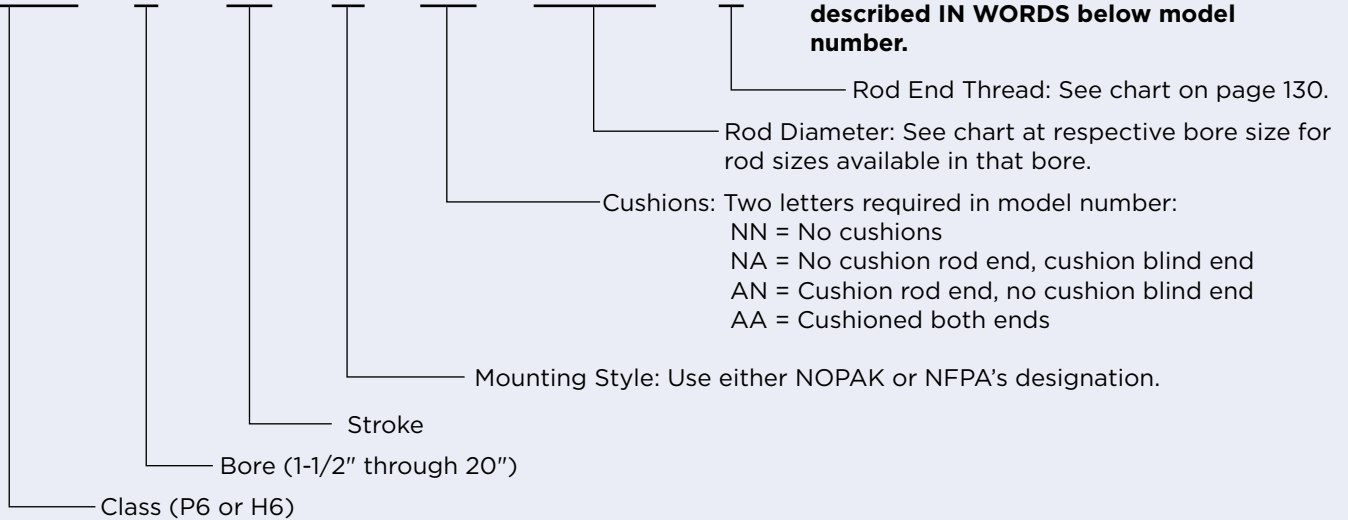
ALSO SPECIFY:

1. Position of cylinder ports and cushion adjustment screws, if other than standard. Standard positions are:
 National pipe thread inlets - position 1
 Ball check - position 2
 Cushion adjustment - position 4
2. Extreme high or low operating or ambient temperatures.
3. Type of hydraulic fluid if other than standard petroleum base oil.
4. Any unusual operating conditions.

ORDERING CODE EXAMPLE

CLP6 - 8 x 18 - A - ΔΔ - 1-3/8 - 4

Any special requirements should be described IN WORDS below model number.



MODEL E4 (NFPA STD. MP4)

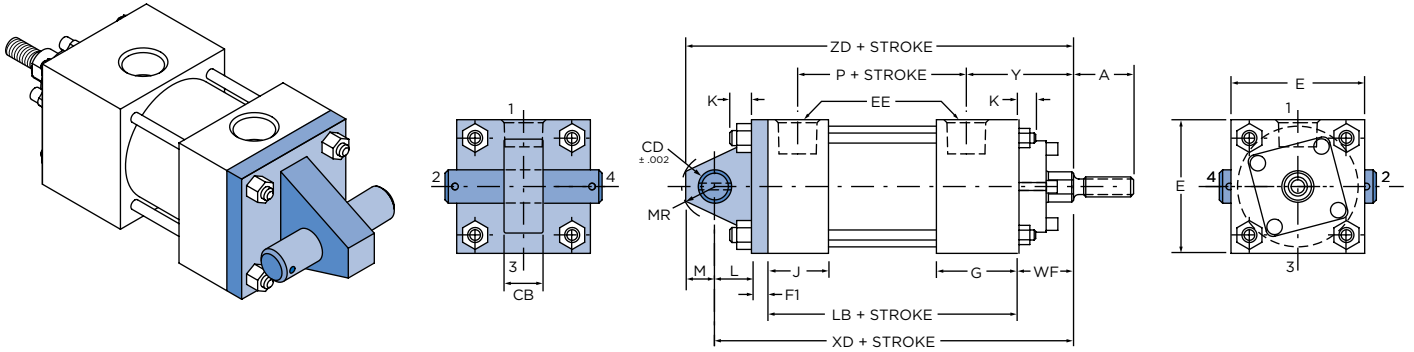


Table 1 These dimensions are constant regardless of rod diameter or stroke.

BORE DIA.	E	F	G	J	K	L	M	CB	CD	EE	MR
1-1/2	2	3/8	1-1/2	1-1/8	1/4	3/4	1/2	3/4	1/2	3/8	5/8
2	2-1/2	3/8	1-1/2	1-1/8	3/8	3/4	1/2	3/4	1/2	3/8	5/8
2-1/2	3	3/8	1-1/2	1-1/8	3/8	3/4	1/2	3/4	1/2	3/8	5/8
3-1/4	3-3/4	5/8	1-3/4	1-1/4	7/16	1-1/4	3/4	1-1/4	3/4	1/2	7/8
4	4-1/2	5/8	1-3/4	1-1/4	7/16	1-1/4	3/4	1-1/4	3/4	1/2	7/8
5	5-1/2	5/8	1-3/4	1-1/4	1/2	1-1/4	3/4	1-1/4	3/4	1/2	7/8
6	6-1/2	7/8	2	1-1/2	9/16	1-1/2	1	1-1/2	1	3/4	1-1/4
8	8-1/2	7/8	2	1-1/2	5/8	1-1/2	1	1-1/2	1	3/4	1-1/4
10	10-5/8	7/8	2-1/4	2	3/4	2-1/8	1-3/8	2	1-3/8	1	1-5/8

DETACHABLE EYE MOUNT CYLINDERS

1-1/2" THROUGH 10" DIAMETER

Table 2 The dimensions given on this table are affected by the piston rod diameter and the stroke.

• = For piston rod dimensions see page 130.

BORE DIA.	ROD MM•	A	P	Y	LB	WF	XD	ZD
1-1/2	5/8	3/4	2-1/8	1-15/16	3-5/8	1	5-3/4	6-1/4
	1	1-1/8	2-1/8	2-5/16	3-5/8	1-3/8	6-1/8	6-5/8
2	5/8	3/4	2-1/8	1-15/16	3-5/8	1	5-3/4	6-1/4
	1	1-1/8	2-1/8	2-5/16	3-5/8	1-3/8	6-1/8	6-5/8
	1-3/8	1-5/8	2-1/8	2-9/16	3-5/8	1-5/8	6-3/8	6-7/8
2-1/2	5/8	3/4	2-1/4	1-15/16	3-3/4	1	5-7/8	6-3/8
	1	1-1/8	2-1/4	2-5/16	3-3/4	1-3/8	6-1/4	6-3/4
	1-3/8	1-5/8	2-1/4	2-9/16	3-3/4	1-5/8	6-1/2	7
	1-3/4	2	2-1/4	2-13/16	3-3/4	1-7/8	6-3/4	7-1/4
3-1/4	1	1-1/8	2-1/2	2-1/2	4-1/4	1-3/8	7-1/2	8-1/4
	1-3/8	1-5/8	2-1/2	2-3/4	4-1/4	1-5/8	7-3/4	8-1/2
	1-3/4	2	2-1/2	3	4-1/4	1-7/8	8	8-3/4
	2	2-1/4	2-1/2	3-1/8	4-1/4	2	8-1/8	8-7/8
4	1	1-1/8	2-1/2	2-1/2	4-1/4	1-3/8	7-1/2	8-1/4
	1-3/8	1-5/8	2-1/2	2-3/4	4-1/4	1-5/8	7-3/4	8-1/2
	1-3/4	2	2-1/2	3	4-1/4	1-7/8	8	8-3/4
	2	2-1/4	2-1/2	3-1/8	4-1/4	2	8-1/8	8-7/8
	2-1/2	3	2-1/2	3-3/8	4-1/4	2-1/4	8-3/8	9-1/8
5	1	1-1/8	2-3/4	2-1/2	4-1/2	1-3/8	7-3/4	8-1/2
	1-3/8	1-5/8	2-3/4	2-3/4	4-1/2	1-5/8	8	8-3/4
	1-3/4	2	2-3/4	3	4-1/2	1-7/8	8-1/4	9
	2	2-1/4	2-3/4	3-1/8	4-1/2	2	8-3/8	9-1/8
	2-1/2	3	2-3/4	3-3/8	4-1/2	2-1/4	8-5/8	9-3/8
	3	3-1/2	2-3/4	3-3/8	4-1/2	2-1/4	8-5/8	9-3/8
6	1-3/8	1-5/8	3-1/8	2-13/16	5	1-5/8	9	10
	1-3/4	2	3-1/8	3-1/16	5	1-7/8	9-1/4	10-1/4
	2	2-1/4	3-1/8	3-3/16	5	2	9-3/8	10-3/8
	2-1/2	3	3-1/8	3-7/16	5	2-1/4	9-5/8	10-5/8
	3	3-1/2	3-1/8	3-7/16	5	2-1/4	9-5/8	10-5/8
	3-1/2	3-1/2	3-1/8	3-7/16	5	2-1/4	9-5/8	10-5/8
8	4	4	3-1/8	3-7/16	5	2-1/4	9-5/8	10-5/8
	1-3/8	1-5/8	3-1/4	2-13/16	5-1/8	1-5/8	9-1/8	10-1/8
	1-3/4	2	3-1/4	3-1/16	5-1/8	1-7/8	9-3/8	10-3/8
	2	2-1/4	3-1/4	3-3/16	5-1/8	2	9-1/2	10-1/2
	2-1/2	3	3-1/4	3-7/16	5-1/8	2-1/4	9-3/4	10-3/4
	3	3-1/2	3-1/4	3-7/16	5-1/8	2-1/4	9-3/4	10-3/4
	3-1/2	3-1/2	3-1/4	3-7/16	5-1/8	2-1/4	9-3/4	10-3/4
	4	4	3-1/4	3-7/16	5-1/8	2-1/4	9-3/4	10-3/4
	4-1/2	4-1/2	3-1/4	3-7/16	5-1/8	2-1/4	9-3/4	10-3/4
5	5	3-1/4	3-7/16	5-1/8	2-1/4	9-3/4	10-3/4	
10	5-1/2	5-1/2	3-1/4	3-7/16	5-1/8	2-1/4	9-3/4	10-3/4
	1-3/4	2	4	3-3/16	6-3/8	1-7/8	11-1/4	12-5/8
	2	2-1/4	4	3-5/16	6-3/8	2	11-3/8	12-3/4
	2-1/2	3	4	3-9/16	6-3/8	2-1/4	11-5/8	13
	3	3-1/2	4	3-9/16	6-3/8	2-1/4	11-5/8	13
	3-1/2	3-1/2	4	3-9/16	6-3/8	2-1/4	11-5/8	13
	4	4	4	3-9/16	6-3/8	2-1/4	11-5/8	13
	4-1/2	4-1/2	4	3-9/16	6-3/8	2-1/4	11-5/8	13
5	5	4	3-9/16	6-3/8	2-1/4	11-5/8	13	
5-1/2	5-1/2	4	3-9/16	6-3/8	2-1/4	11-5/8	13	