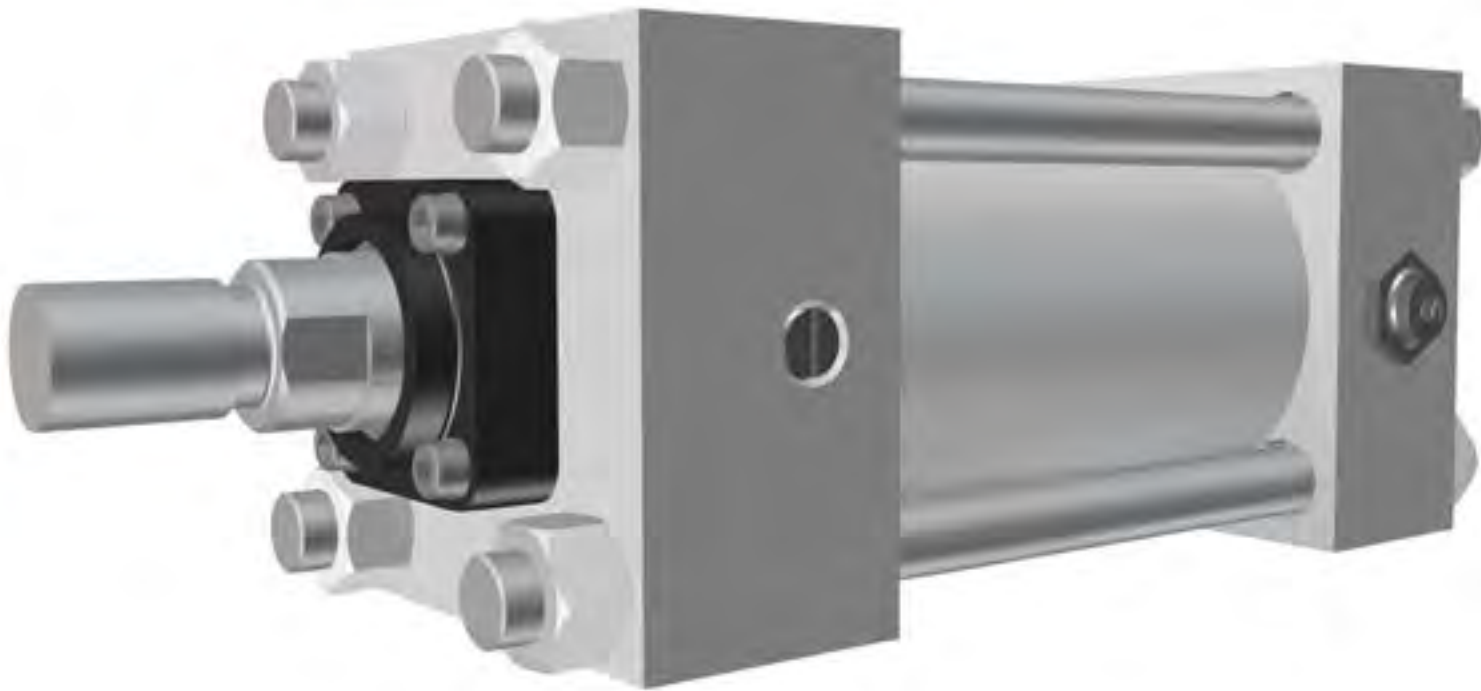


# Class 6

## Intermediate Pressure Square-Head Cylinders

---



## HOW TO ORDER

### YOU CAN HELP ENSURE PROMPT PROCESSING OF YOUR ORDER BY INCLUDING ALL OF THE FOLLOWING REQUESTED INFORMATION:

1. Quantity required.
2. Operating medium: Series P6 or H6.  
P for pneumatic and H for hydraulic.
3. Bore size.
4. Stroke length in inches.
5. Type of mounting (NOPAK Model or NFPA STD. style).
6. Type of cushioning:  
NN = non-cushioned  
NA = cushioned blind end  
AN = cushioned rod end  
AA = cushioned both ends
7. Piston rod diameter and type of rod threading - specify Type 1, 3, 4, 5, 6 or 7. See page 130.

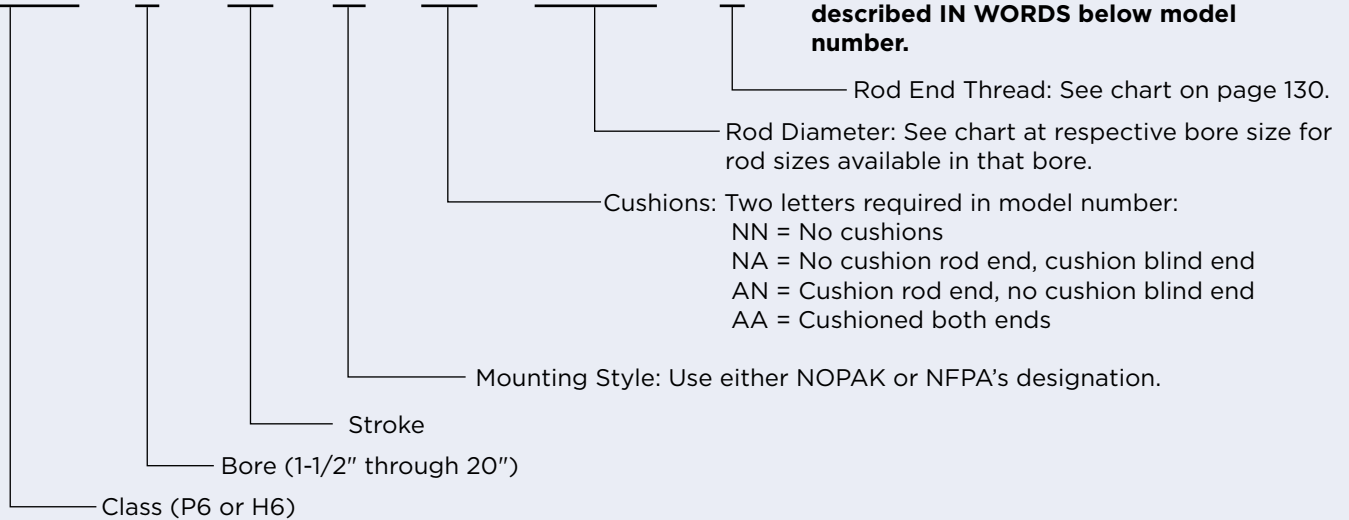
### ALSO SPECIFY:

1. Position of cylinder ports and cushion adjustment screws, if other than standard. Standard positions are:  
National pipe thread inlets - position 1  
Ball check - position 2  
Cushion adjustment - position 4
2. Extreme high or low operating or ambient temperatures.
3. Type of hydraulic fluid if other than standard petroleum base oil.
4. Any unusual operating conditions.

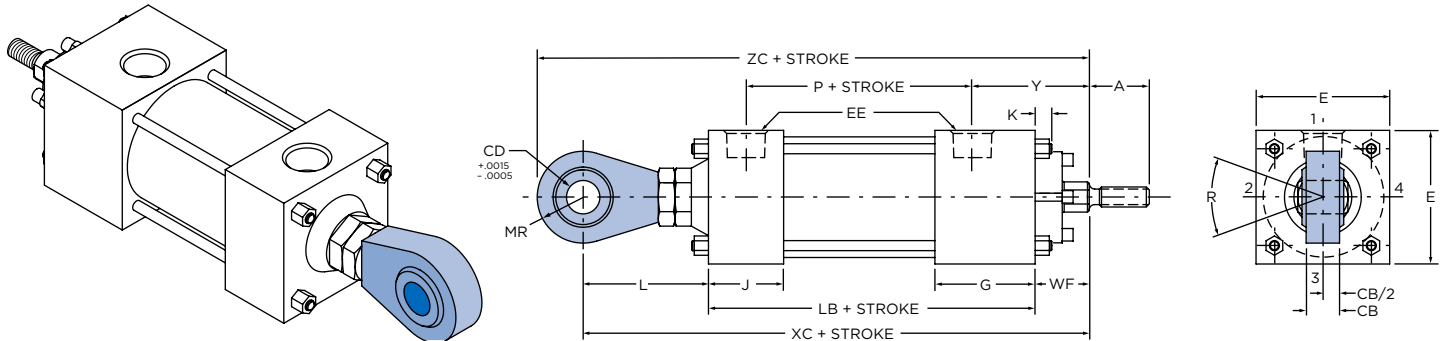
### ORDERING CODE EXAMPLE

**CLP6 - 8 x 18 - A - ΔΔ - 1-3/8 - 4**

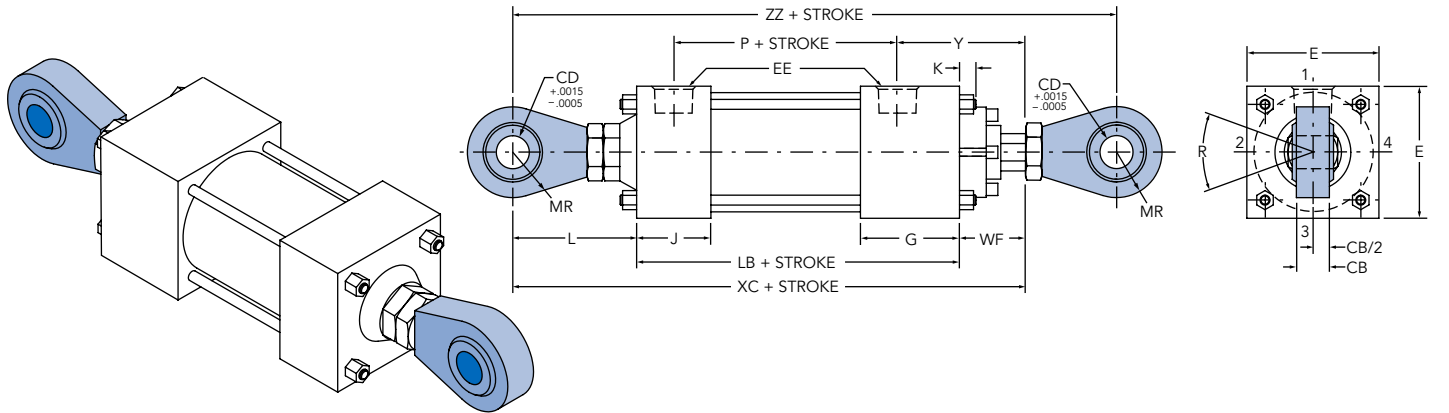
**Any special requirements should be described IN WORDS below model number.**



**MODEL UE (NFPA STD. NONE)** ▲



**MODEL UUE (NFPA STD. NONE)** ▲



▲ = See Table A on page 125 for bore and rod combinations using head plates with threaded bronze glands.

**Table 1** These dimensions are constant regardless of rod diameter or stroke.

BORE DIA.	E	F	G	K	L	R	CB	CD	EE	MR
1-1/2	2	3/8	1-1/2	1/4	1-7/8	12°	5/8	1/2	3/8	11/16
2	2-1/2	3/8	1-1/2	3/8	1-7/8	12°	5/8	1/2	3/8	11/16
2-1/2	3	3/8	1-1/2	5/16	1-7/8	12°	5/8	1/2	3/8	11/16
3-1/4	3-3/4	5/8	1-3/4	7/16	2-7/8	13-1/2°	7/8	3/4	1/2	7/8
4	4-1/2	5/8	1-3/4	7/16	2-7/8	13-1/2°	7/8	3/4	1/2	7/8
5	5-1/2	5/8	1-3/4	1/2	2-7/8	13-1/2°	7/8	3/4	1/2	7/8
6	6-1/2	3/4	2	9/16	4-1/8	14°	1-3/8	1	3/4	1-3/8

# SPHERICAL EYE PIN MOUNT CYLINDERS

1-1/2" THROUGH 6" DIAMETER

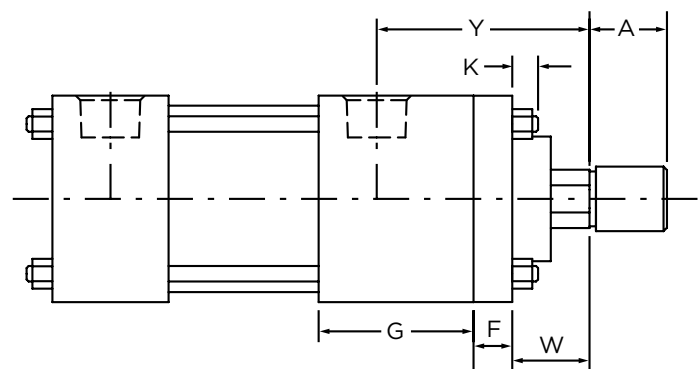
**Table 2** The dimensions given on this table are affected by the piston rod diameter and the stroke.

• = For piston rod dimensions see page 130.

BORE DIA.	ROD MM•	A	P	Y	LB	W	WF	XC	ZC	ZZ
1-1/2	5/8	3/4	2-1/8	1-15/16	3-5/8	5/8	1	6-1/2	7-3/16	7-11/16
	1	1-1/8	2-1/8	2-5/16	3-5/8	1	1-3/8	6-7/8	7-9/16	8-1/16
2	5/8	3/4	2-1/8	1-15/16	3-5/8	-	1	6-1/2	7-3/16	7-11/16
	1	1-1/8	2-1/8	2-5/16	3-5/8	1	1-3/8	6-7/8	7-9/16	8-1/16
	1-3/8	1-5/8	2-1/8	2-9/16	3-5/8	1-1/4	1-5/8	7-1/8	7-13/16	8-5/16
2-1/2	5/8	3/4	2-1/4	1-15/16	3-3/4	-	1	6-5/8	7-5/16	7-13/16
	1	1-1/8	2-1/4	2-5/16	3-3/4	-	1-3/8	7	7-11/16	8-3/16
	1-3/8	1-5/8	2-1/4	2-9/16	3-3/4	-	1-5/8	7-1/4	7-15/16	8-7/16
	1-3/4	2	2-1/4	2-13/16	3-3/4	1-1/2	1-7/8	7-1/2	8-3/16	8-11/16
3-1/4	1	1-1/8	2-1/2	2-1/2	4-1/4	-	1-3/8	8-1/2	9-3/8	10-1/16
	1-3/8	1-5/8	2-1/2	2-3/4	4-1/4	-	1-5/8	8-3/4	9-5/8	10-5/16
	1-3/4	2	2-1/2	3	4-1/4	-	1-7/8	9	9-7/8	10-9/16
	2	2-1/4	2-1/2	3-1/8	4-1/4	1-3/8	2	9-1/8	10	10-11/16
4	1	1-1/8	2-1/2	2-1/2	4-1/4	-	1-3/8	8-1/2	9-3/8	10-1/16
	1-3/8	1-5/8	2-1/2	2-3/4	4-1/4	-	1-5/8	8-3/4	9-5/8	10-5/16
	1-3/4	2	2-1/2	3	4-1/4	-	1-7/8	9	9-7/8	10-9/16
	2	2-1/4	2-1/2	3-1/8	4-1/4	-	2	9-1/8	10	10-11/16
	2-1/2	3	2-1/2	3-3/8	4-1/4	1-5/8	2-1/4	9-3/8	10-1/4	10-15/16
5	1	1-1/8	2-3/4	2-1/2	4-1/2	-	1-3/8	8-3/4	9-5/8	10-5/16
	1-3/8	1-5/8	2-3/4	2-3/4	4-1/2	-	1-5/8	9	9-7/8	10-9/16
	1-3/4	2	2-3/4	3	4-1/2	-	1-7/8	9-1/4	10-1/8	10-13/16
	2	2-1/4	2-3/4	3-1/8	4-1/2	-	2	9-3/8	10-1/4	10-15/16
	2-1/2	3	2-3/4	3-3/8	4-1/2	-	2-1/4	9-5/8	10-1/2	11-3/16
	3	3-1/2	2-3/4	3-3/8	4-1/2	-	2-1/4	9-5/8	10-1/2	11-3/16
	3-1/2	3-1/2	2-3/4	3-3/8	4-1/2	1-5/8	2-1/4	9-5/8	10-1/2	11-3/16
6	1-3/8	1-5/8	3-1/8	2-13/16	5	-	1-5/8	10-3/4	12-1/8	13-5/16
	1-3/4	2	3-1/8	3-1/16	5	-	1-7/8	11	12-3/8	13-9/16
	2	2-1/4	3-1/8	3-3/16	5	-	2	11-1/8	12-1/2	13-11/16
	2-1/2	3	3-1/8	3-7/16	5	-	2-1/4	11-3/8	12-3/4	13-15/16
	3	3-1/2	3-1/8	3-7/16	5	-	2-1/4	11-3/8	12-3/4	13-15/16
	3-1/2	3-1/2	3-1/8	3-7/16	5	-	2-1/4	11-3/8	12-3/4	13-15/16
	4	4	3-1/8	3-7/16	5	1-1/2	2-1/4	11-3/8	12-3/4	13-15/16

**Table A**

THE FOLLOWING BORE/ROD COMBINATIONS USE HEAD PLATE AND BRONZE GLANDS AS SHOWN AT RIGHT	
BORE	ROD DIAMETER (MM)
1-1/2	5/8 & 1
2	1 & 1-3/8
2-1/2	1-3/4
3-1/4	2
4	2-1/2
5	3-1/2
6	4



**NOTE:** Bolt-on glands not available on these combinations.  
**NOTE:** Threaded Bronze Gland used on all Model D Cylinders.  
 Bolt-on Gland used on all Model DG Cylinders.